



Shri Balasaheb Mane Shikshan Prasarak Mandal's,  
**Ashokrao Mane Group of Institutions**

Vathar Tarf Vadgaon

Tal – Hatkanangle, Dist- Kolhapur, Maharashtra, India, 416112, [www.amgoi.edu.in](http://www.amgoi.edu.in)

**An Autonomous Institute**

(Affiliated to DBATU University, Lonere)

# Outcome Based Education (OBE) Manual



*Chitra Rajan*  
HOD

DEPT. OF ELECTRONICS AND COMPUTER ENGINEERING  
SHRI BALASAHEB MANE SHIKSHAN PRASARAK MANDAL'S  
ASHOKRAO MANE GROUP OF INSTITUTIONS



*Mrs. S. R. Chougule*  
Dr. Mrs. S. R. Chougule  
DIRECTOR

Shri Balasaheb Mane Shikshan Prasarak Mandal's  
Ashokrao Mane Group Of institutions  
Vathar Tarf Vadgaon, Tal. Hatkanangle  
Dist. Kolhapur, Maharashtra - 416112

## INDEX

Sr. No	Content	Page No
1	INTRODUCTION TO OUTCOME-BASED EDUCATION (OBE)	
2	VISION, MISSION & QUALITY POLICY OF INSTITUTE	
3	PROGRAM OUTCOMES, PSO AND PEO	
4	BLOOMS TAXANOMY LEARNING	
5	OBE FRAMEWORK DESIGN	
6	OBE IMPLEMENTATION	
7	METHODS TO BRIDGE CURRICULUM GAPS	
8	ATTAINMENT OF COURSE OUTCOMES (COS), PROGRAM OUTCOMES (POS) AND PROGRAM-SPECIFIC OUTCOMES (PSOS)	

# 1. INTRODUCTION TO OUTCOME-BASED EDUCATION (OBE)

## 1.1 INTRODUCTION

Education plays a fundamental role in shaping individuals, economies, and societies. In today's fast-evolving world, traditional education models that focus on syllabus completion and theoretical knowledge are no longer sufficient. Modern education systems require a more structured and outcome-driven approach to ensure that graduates are equipped with relevant skills and knowledge. This necessity has led to the adoption of Outcome-Based Education (OBE), a learning framework that emphasizes achieving specific, measurable outcomes in terms of knowledge, skills, and attitudes.

OBE is a learner-centric approach that ensures students develop competencies that are directly applicable to real-world challenges. Unlike traditional methods, which primarily focus on rote memorization and standardized testing, OBE ensures that students understand concepts, develop critical thinking, enhance their problem-solving abilities, and gain practical skills that will help them in their professional and personal lives.

In India, OBE has gained significant importance due to the increasing demand for quality education, employable graduates, and globally competitive institutions. The government and regulatory bodies such as the National Board of Accreditation (NBA) and the National Assessment and Accreditation Council (NAAC) have played a vital role in integrating OBE into higher education institutions (HEIs). The National Education Policy (NEP) 2020 has further emphasized the importance of OBE, making it a crucial component of India's evolving education landscape.

## 1.2 OUTCOME-BASED EDUCATION (OBE): A PARADIGM SHIFT IN LEARNING

OBE represents a major paradigm shift from conventional teaching approaches. In a traditional education system, the focus is on what teachers teach, and students are expected to absorb the information through lectures, textbooks, and examinations. However, OBE focuses on:

- Clearly defined learning outcomes that students must achieve by the end of a course or program.
- Flexible learning methods that accommodate different learning styles and preferences.
- Continuous assessment and improvement to ensure students develop the required competencies.

OBE is structured around three core levels of outcomes:

1. **Program Educational Objectives (PEOs)** – These are broad statements that define what graduates are expected to achieve within a few years of completing

their degree. They typically relate to career growth, professional development, and societal contributions.

2. **Program Outcomes (POs)** – These are specific skills and abilities that students must acquire upon graduation. They are aligned with industry requirements and global educational standards.
3. **Course Outcomes (COs)** – These are the learning outcomes for individual courses. Each course is designed to contribute to the achievement of program outcomes.

By aligning education with predefined learning outcomes, OBE ensures that students are job-ready, innovative, and capable of addressing real-world challenges.

### 1.3 ACCREDITATION AND ITS ROLE IN OBE IMPLEMENTATION

Accreditation is the process of evaluating and recognizing an institution or program based on predefined quality standards. It plays a crucial role in ensuring that higher education institutions maintain high academic standards and continuously improve their curriculum and teaching methods. In India, the two main accreditation bodies responsible for higher education are:

#### a) National Board of Accreditation (NBA)

- NBA primarily accredits technical and professional programs, such as engineering, management, and pharmacy courses.
- It follows Outcome-Based Accreditation (OBA), ensuring that institutions meet global education standards and focus on measurable student outcomes.
- NBA accreditation is aligned with the Washington Accord, which enables international recognition of degrees.

#### b) National Assessment and Accreditation Council (NAAC)

- NAAC assesses the overall quality of institutions, covering various disciplines beyond technical education.
- It evaluates parameters such as teaching-learning processes, research output, infrastructure, and governance.
- Institutions receive grades ranging from A++ to D, indicating their quality and performance.

Accreditation through these bodies ensures that institutions adhere to high academic standards, continuously improve their programs, and enhance student learning experiences.

## 1.4 BENEFITS OF OBE AND ACCREDITATION IN INDIA

The implementation of OBE and accreditation frameworks brings several advantages to students, educators, and institutions. Some of the key benefits include:

### a) Enhanced Learning Quality

- OBE moves beyond memorization, emphasizing deep learning, conceptual understanding, and real-world application.
- Students engage in hands-on projects, case studies, and problem-solving activities that enhance their comprehension.

### b) Industry Relevance and Employability

- Employers today seek graduates who possess critical thinking, teamwork, communication, and technical skills.
- OBE ensures that academic programs are aligned with industry expectations, making graduates more employable.
- Accreditation acts as a quality benchmark, ensuring that institutions produce competent professionals.

### c) Continuous Improvement and Innovation

- Since OBE emphasizes measurable learning outcomes, institutions must regularly update their curriculum, teaching methods, and assessment strategies.
- Faculty members engage in continuous professional development, adopting modern pedagogical techniques.

### d) Global Recognition and Student Mobility

- Accredited institutions gain international credibility, enabling students to pursue higher education abroad or seek employment in multinational companies.
- Programs accredited by NBA under the Washington Accord are recognized in several countries, offering global career opportunities.

### e) Student-Centric Education

- OBE encourages self-learning, innovation, and creativity.
- Students take ownership of their education, allowing for personalized and flexible learning experiences.

## 1.5 CHALLENGES IN IMPLEMENTING OBE AND ACCREDITATION

Despite its numerous benefits, implementing OBE and achieving accreditation come with certain challenges:

### a) Resistance to Change

- Traditional teaching methods are deeply ingrained in Indian education. Transitioning to OBE requires faculty training, mindset shifts, and curriculum restructuring.

### b) Resource Constraints

- Many institutions lack the necessary infrastructure, funding, and skilled educators required for OBE implementation.

### c) Effective Assessment Methods

- Evaluating higher-order skills such as critical thinking, problem-solving, and creativity is more complex than traditional examinations.
- Institutions need robust assessment frameworks to measure learning outcomes effectively.

### d) Standardization across Institutions

- India has a diverse range of educational institutions, from premier institutes like IITs and IIMs to smaller private colleges.
- Ensuring uniform OBE adoption and maintaining consistent quality standards across all institutions is a challenge.

## 1.6 SUMMARY

The shift towards Outcome-Based Education (OBE) and accreditation marks a significant transformation in India's higher education landscape. By focusing on learning outcomes, industry alignment, and continuous improvement, OBE ensures that students develop the necessary skills to succeed in the modern workforce. Accreditation by NBA and NAAC further strengthens the credibility of institutions, fostering global recognition and career opportunities for graduates.

Despite challenges, the adoption of OBE is crucial for India's long-term educational development. The implementation of NEP 2020, along with accreditation reforms, will play a pivotal role in enhancing education quality and making Indian graduates globally competitive. Institutions must actively embrace innovative teaching methodologies, modern assessment techniques, and continuous improvement strategies to fully leverage the benefits of OBE.

As India moves forward in its educational journey, the collaborative efforts of policymakers, educators, industry stakeholders, and students will be key in ensuring a world-class education system driven by quality, innovation, and measurable outcomes.

## 2. VISION, MISSION & QUALITY POLICY OF INSTITUTE

### 2.1 ABOUT THE INSTITUTE

Ashokrao Mane Group of Institutions, Vathar, Pune, established in 2007, offers a diverse range of academic programs. The institute provides Ten Undergraduate Programs in Civil Engineering, Computer Engineering, Electrical Engineering, Electronics & Telecommunication Engineering, Artificial Intelligence & Data Science (AIDS), Artificial Intelligence & Machine Learning (AIML), Robotics & Automation Engineering, Mechanical Engineering, Information Technology, and Electronics & Computer Engineering. Additionally, it offers Five Postgraduate Programs, an MBA Program, and PhD Research Centers in Mechanical Engineering and Electronics & Telecommunication Engineering.

The institute has been accredited with an 'A' grade in Cycle 1 (2017) and an 'A+' grade in Cycle 2 (2023). It is also ISO 21001:2018 (EOMS) certified. AMGOI College has been granted Autonomous status for 10 years, conferred by the University Grants Commission (UGC) and approved by Dr. Babasaheb Ambedkar Technological University, Lonere effective from the academic year 2024-2025.

### 2.2 INSTITUTE VISION & MISSION

<b>Vision</b>	To be a premier institute in technical education by imparting academic excellence, research, social and entrepreneurial attitude.
<b>Mission</b>	<p><b>M1:</b> To achieve academic excellence through innovative teaching and learning process.</p> <p><b>M2:</b> To imbibe the research culture for addressing industry and societal needs.</p> <p><b>M3:</b> To inculcate social attitude through community engagement initiatives.</p> <p><b>M4:</b> To provide conducive environment for building the entrepreneurial skills.</p>



### 3. QUALITY POLICY

At Ashokrao Mane Group of Institutions, Vathar, we are committed to delivering quality engineering education through continuous improvement in teaching, learning, evaluation, research, and holistic student development.

### 3. PROGRAM OUTCOMES, PSO AND PEO

#### 3.1 PROGRAM OUTCOMES – GRADUATE ATTRIBUTES

PO No.	Program Outcomes (POs)
PO1	<b>Engineering Knowledge:</b> Apply knowledge of mathematics, natural science, computing, engineering fundamentals and an engineering specialization as specified in WK1 to WK4 respectively to develop to the solution of complex engineering problems.
PO2	<b>Problem Analysis:</b> Identify, formulate, review research literature and analyze complex engineering problems reaching substantiated conclusions with consideration for sustainable development. (WK1 to WK4)
PO3	<b>Design/Development of Solutions:</b> Design creative solutions for complex engineering problems and design/develop systems/components/processes to meet identified needs with consideration for the public health and safety, whole-life cost, net zero carbon, culture, society and environment as required. (WK5)
PO4	<b>Conduct Investigations of Complex Problems:</b> Conduct investigations of complex engineering problems using research-based knowledge including design of experiments, modelling, analysis & interpretation of data to provide valid conclusions. (WK8).
PO5	<b>Engineering Tool Usage:</b> Create, select and apply appropriate techniques, resources and modern engineering & IT tools, including prediction and modelling recognizing their limitations to solve complex engineering problems. (WK2 and WK6)
PO6	<b>The Engineer and The World:</b> Analyze and evaluate societal and environmental aspects while solving complex engineering problems for its impact on sustainability with reference to economy, health, safety, legal framework, culture and environment.
PO7	<b>Ethics:</b> Apply ethical principles and commit to professional ethics, human values, diversity and inclusion; adhere to national & international laws. (WK1, WK5, and WK7).
PO8	<b>Individual and Collaborative Team work:</b> Function effectively as an individual, and as a member or leader in diverse/multi-disciplinary teams.
PO9	<b>Communication:</b> Communicate effectively and inclusively within the engineering community and society at large, such as being able to comprehend and write effective reports and design documentation, make effective presentations considering cultural, language, and learning differences
PO10	<b>Project Management and Finance:</b> Apply knowledge and understanding of engineering management principles and economic decision-making and apply these to one's own work, as a member and leader in a team, and to manage projects and in multidisciplinary environments.

<b>PO11</b>	<b>Life-Long Learning:</b> Recognize the need for, and have the preparation and ability for i) independent and life-long learning ii) adaptability to new and emerging technologies and iii) critical thinking in the broadest context of technological change. (WK8).
-------------	------------------------------------------------------------------------------------------------------------------------------------------------------------------------------------------------------------------------------------------------------------------------

### 3.2 PROGRAM SPECIFIC OUTCOMES (PSO) –(ELECTRONICS AND COMPUTER ENGINEERING)

These qualities are expected, a student is able to do at the time of graduation. The PSOs are program specific. PSOs are defined by the department offering the program. There usually are two to four PSOs for a department. For example, the Program Specific Outcomes for Department of Mechanical Engineering is given below:

PSO No.	Program Specific Outcomes Statement
<b>PSO1</b>	Graduates will be able to apply the principles of electronics, microcontrollers, signal processing, and automation to design and implement embedded systems for industrial, automotive, and consumer applications using appropriate hardware and software tools.
<b>PSO2</b>	Graduates will demonstrate the ability to design and develop intelligent computing systems, leveraging AI/ML, IoT, cloud technologies, and advanced communication protocols to address real-world problems with focus on sustainability, scalability, and security.
<b>PSO3</b>	Graduates will exhibit competency in applying multidisciplinary engineering knowledge, ethical practices, project management, and modern tools to create innovative solutions and contribute effectively in collaborative environments through life-long learning and entrepreneurship.

### 3.3 PROGRAM EDUCATIONAL OBJECTIVES (PEOs)

While designing Program Educational Objectives (PEOs), it is essential to prepare students for diverse career paths, including higher education, industry roles, and entrepreneurship. Key considerations include:

- 1. Career Readiness** – Equip students for advanced studies, research, global/local industry roles, or entrepreneurial ventures with a strong technical foundation.
- 2. Core Competencies** – Foster problem-solving, analytical thinking, and practical application skills through hands-on learning and interdisciplinary exposure.
- 3. Knowledge Breadth** – Ensure a comprehensive curriculum that integrates emerging technologies, research insights, and industry trends.
- 4. Professional Skills** – Develop effective communication, teamwork, leadership, and ethical values to navigate dynamic work environments.
- 5. Supportive Learning Environment** – Provide modern infrastructure, industry

collaborations, mentorship, and experiential learning opportunities to enhance student growth.

Well-structured PEOs ensure graduates are skilled, adaptable, and ethically responsible, empowering them to excel in their careers and contribute to society.

PEO No	Program Educational Objectives (PEOs)
PEO1	To provide students with a solid foundation in the field of Electronics and computer which enable them to establish as a successful professionals.
PEO2	To design and produce novel products and solutions to the real life problems for the satisfaction of community needs.
PEO3	To prepare the students for a successful career with practical knowledge to handle advanced processes & team work skills.
PEO4	To inculcate professional and ethical attitude and effective communication skills
PEO5	To foster awareness of the lifelong learning, research attitude and entrepreneurship skills.

### 3.4 METHOD FOR DEFINING COURSE OUTCOMES (COS)

As institute is affiliated to Dr. Babasaheb Ambedkar Technological University, **Lone** the Board of Studies formulates Course Outcomes (COs) during syllabus revisions. COs are retained upon agreement between the domain coordinator and course faculty. Any modifications must align with Bloom's Taxonomy Levels and be validated by the domain coordinator.

## BLOOMS TAXANOMY LEARNING

### 4.1 INTRODUCTION

Benjamin Bloom with his team developed a classification of levels of intellectual behavior important in learning. This became a taxonomy, including three overlapping domains: the cognitive, psychomotor and affective. Bloom's taxonomy is most often used when designing educational, training, and learning processes. The three domains of learning:

- 1) Knowledge and intellectual skills
- 2) Affective: growth in feelings or emotional areas (attitude or self)
- 3) Psychomotor: manual or physical skills

From the point of designing educational training cognitive domain of learning is required to be focused as it is predominated in majority of courses. The six levels of intellectual skills identified as per revised Bloom's taxonomy:

- 1) Remember: Recalling specific facts, definitions
- 2) Understand: Grasp the meaning of facts, definitions, concepts.
- 3) Apply: Use the concepts to solve problems.
- 4) Analyze: Break information into component parts, make inference.
- 5) Evaluate: Judge the value of information.
- 6) Create: Produce new ideas/processes.

#### 4.2 ACTION VERBS

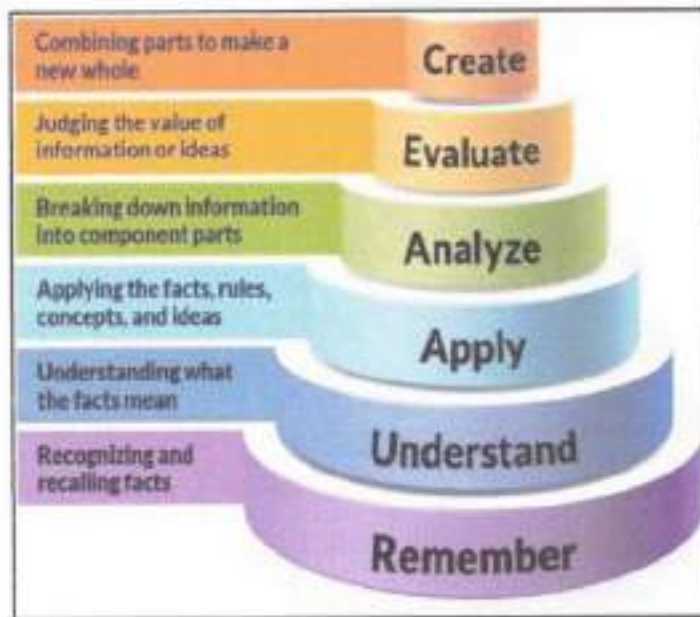
Choice of action verbs in constructing assessment questions is important to consider. Quite often, the action verbs are indicators of the complexity (level) of the question. Over time, educators have come up with a taxonomy of measurable verbs corresponding to each of the Bloom's cognitive levels. These verbs help us not only to describe and classify observable knowledge, skills and abilities but also to frame the examination or assignment questions that are appropriate to the level we are trying to assess.

Suggestive list of skills/ competencies to be demonstrated at each of the Bloom's level and corresponding cues/ verbs for the examination/ test questions is given below:

Level	Skill Demonstrated	Question cues / Verbs for tests
-------	--------------------	---------------------------------

1. Remember	<ul style="list-style-type: none"> <li>• Ability to recall of information like facts, conventions, definitions, jargon, technical terms, classifications, categories, and criteria</li> <li>• Ability to recall methodology and procedures, abstractions, principles, and theories in the field</li> <li>• Knowledge of dates, events, places</li> <li>• Mastery of subject matter</li> </ul>	list, define, tell, describe, recite, recall, identify, show, label, tabulate, quote, name, who, when, where
2. Understand	<ul style="list-style-type: none"> <li>• Understanding information</li> <li>• Grasp meaning</li> <li>• Translate knowledge into new context</li> <li>• Interpret facts, compare, contrast</li> <li>• Order, group, infer causes</li> <li>• Predict consequences</li> </ul>	describe, explain, paraphrase, restate, associate, contrast, summarize, differentiate interpret, discuss
3. Apply	<ul style="list-style-type: none"> <li>• Use information</li> <li>• Use methods, concepts, laws, theories in new situations</li> <li>• Solve problems using required skills or knowledge</li> <li>• Demonstrating correct usage of a method or procedure</li> </ul>	calculate, predict, apply, solve, illustrate, use, demonstrate, determine, model, experiment, show, examine, modify
4. Analyse	<ul style="list-style-type: none"> <li>• Break down a complex problem into parts</li> <li>• Identify the relationships and interaction between the different parts of a complex problem</li> <li>• Identify the missing information, sometimes the redundant information and the contradictory information, if any</li> </ul>	classify, outline, break down, categorize, analyze, diagram, illustrate, infer, select
5. Evaluate	<ul style="list-style-type: none"> <li>• Compare and discriminate between ideas</li> <li>• Assess value of theories, presentations</li> <li>• Make choices based on reasoned argument</li> <li>• Verify value of evidence</li> <li>• Recognize subjectivity</li> <li>• Use of definite criteria for judgments</li> </ul>	assess, decide, choose, rank, grade, test, measure, defend, recommend, convince, select, judge, support, conclude, argue, justify, compare, summarize, evaluate
6. Create	<ul style="list-style-type: none"> <li>• Use old ideas to create new ones</li> <li>• Combine parts to make (new) whole.</li> <li>• Generalize from given facts</li> <li>• Relate knowledge from several areas</li> <li>• Predict, draw conclusions</li> </ul>	design, formulate, build, invent, create, compose, generate, derive, modify, develop, integrate

Figure: Blooms Taxonomy Levels



## OBE FRAMEWORK DESIGN

The Outcome-Based Education (OBE) Framework at Ashokrao Mane Group of Institutions, Vathar is structured to ensure a systematic, measurable, and continuous improvement-driven approach to education. The framework aligns with NBA, NAAC, and SPPU guidelines, focusing on achieving Program Outcomes (POs), Program-Specific Outcomes (PSOs), and Course Outcomes (COs) through well-defined teaching, learning, and assessment strategies.

### 5.1 COMPONENTS OF THE OBE FRAMEWORK

#### A. Vision and Mission Alignment

- Define the Institution's Vision and Mission to set the foundation for learning goals.
- Align program objectives with national and international accreditation standards.

#### B. Program Educational Objectives (PEOs)

- Define long-term career and professional achievements expected from graduates (within 3-5 years post-graduation).
- PEOs should focus on higher studies, industry roles, entrepreneurship, and societal contributions.

#### C. Program Outcomes (POs) and Program-Specific Outcomes (PSOs)

- **POs (Graduate Attributes):** Defined by NBA and SPPU, covering knowledge, problem-solving, communication, ethics, and lifelong learning.
- **PSOs:** Specific to each department, ensuring students develop expertise in their respective domains.

#### D. Course Outcomes (COs)

- Each course defines 4-6 measurable COs that align with POs and PSOs.
- COs are framed using Bloom's Taxonomy to ensure different cognitive levels (Remember, Understand, Apply, Analyze, Evaluate, Create).

### 5.2 OBE IMPLEMENTATION PROCESS

#### A. Curriculum Design & Mapping

- **CO-PO-PSO Mapping:** Each course outcome (CO) is mapped to relevant POs and PSOs.
- Curriculum includes core courses, electives, skill-based courses, and industry-focused training.
- Incorporation of interdisciplinary learning, research, and innovation to align with industry demands.

### B. Teaching-Learning Strategies

- **Student-Centric Pedagogy:** Includes project-based learning, case studies, industry exposure, and ICT-enabled teaching.
- **Experiential Learning:** Hands-on training, virtual labs, internships, and real-world problem-solving.
- **Soft Skills & Ethical Training:** Developing communication, teamwork, and ethical responsibility.

### C. Assessment & Evaluation

- **Direct Assessment:**

Direct Assessment tools includes internal assessment and external assessment tools. Internal Assessment is done through quizzes, assignments, class test etc. External Assessment is done through University examinations such In sem, endsem examination, TW/OR/PR examinations etc.

- **Indirect Assessment:**

**Course Exit Survey:** At the end of each semester the course exit surveys are conducted for all the courses completed in the respective semester.

## 5.3 OBE ATTAINMENT & CONTINUOUS IMPROVEMENT

### A. Attainment Calculation

- COs are evaluated through formative and summative assessments.
- COs contribute to POs and PSOs, and their attainment is measured quantitatively.

### B. Data-Driven Decision Making

- Analysis of student performance to identify gaps in learning outcomes.
- Action plans implemented for curriculum enhancement, faculty development, and learning resource improvement.

### C. Stakeholder Engagement

- Industry collaborations, alumni mentoring, and employer feedback to refine course content.
- Regular faculty training programs to adopt best teaching practices.

## 5.4 SUPPORT SYSTEM FOR OBE IMPLEMENTATION

### A. Academic Monitoring

- PAQIC and DAB to oversee framework execution and compliance.
- Department Coordinators for monitoring CO-PO-PSO attainment.

### B. Research & Innovation Support

- Centers of Excellence to promote R&D in emerging technologies.
- Startup and Entrepreneurship Cell to encourage innovation.

### C. Infrastructure & Learning Resources

- Smart classrooms, digital libraries, and ICT-enabled learning.
- Industry-Institute partnerships for real-world exposure.

The OBE Framework at Ashokrao Mane Group Of Institutions ensures an outcome-driven approach to academic excellence, skill development, and professional growth. By fostering a structured learning process, industry relevance, and continuous improvement, the institution aims to produce competent, innovative, and socially responsible engineers.

## OBE IMPLEMENTATION

The Outcome-Based Education (OBE) Implementation Structure at Ashokrao Mane Group of Institutions, Vathar is designed to ensure systematic curriculum planning, effective teaching-learning processes, and continuous assessment to achieve the desired Program Outcomes (POs), Program-Specific Outcomes (PSOs), and Course Outcomes (COs) as per university guidelines.

### 6.1 GOVERNANCE AND LEADERSHIP

- **Institute Academic Coordinator & IQAC (Internal Quality Assurance Cell):** Oversees OBE implementation and ensures continuous quality improvement.
- **PAQIC :** Defines policies, monitors execution, and provides training on OBE methodologies.
- **Department Academic Coordinators:** Responsible for executing OBE at the departmental level, aligning curriculum with POs and PSOs.

### 6.2 CURRICULUM DESIGN & MAPPING

- **Alignment with Graduate Attributes:** Ensuring that COs contribute to POs and PSOs as prescribed by Dr. Babasaheb Ambedkar Technological University Lonere (SPPU) and NBA guidelines.
- **Bloom's Taxonomy Integration:** Defining measurable COs using action-oriented verbs at different cognitive levels.
- **Curriculum Enhancement:** Incorporating industry-relevant content, skill development programs, and multidisciplinary courses.

### 6.3 TEACHING-LEARNING PROCESS

- **Student-Centric Approach:** Implementation of active learning methods, including project-based learning, problem-solving sessions, and flipped classrooms.

- **ICT-Enabled Teaching:** Use of LMS, virtual labs, and online resources for interactive learning.
- **Industry Exposure:** Guest lectures, industry visits, and internships to bridge the industry- academia gap.
- **Skill Development & Employability Training:** Conducting workshops on technical and soft skills to enhance job readiness.

#### 6.4 ATTAINMENT ANALYSIS & CONTINUOUS IMPROVEMENT

- **CO-PO Mapping & Attainment Calculation:** Using assessment data to evaluate how well course outcomes contribute to program outcomes.
- **Action Plan for Improvement:**
  - Identifying gaps in attainment and implementing corrective actions.
  - Faculty training programs and curriculum revisions to enhance learning effectiveness.
- **Periodic Review & Accreditation Readiness:** Ensuring compliance with NBA, NAAC, and university regulations for continuous enhancement.

#### 6.5 RESEARCH, INNOVATION & ENTREPRENEURSHIP SUPPORT

- **Encouraging Research & Publications:** Promoting faculty and student participation in research projects, patents, and conferences.
- **Startup & Entrepreneurship Development:** Providing incubation support, mentorship, and funding opportunities for student-led startups.
- **Interdisciplinary Innovation Labs:** Establishing labs for AI, IoT, Robotics, and emerging technologies to foster innovation.

#### 6.6 STAKEHOLDER ENGAGEMENT & INSTITUTIONAL GROWTH

- **Industry Collaborations:** MoUs with companies for internships, training, and joint research projects.
- **Alumni Involvement:** Leveraging alumni network for mentorship and career guidance.
- **Social Responsibility & Sustainability:** Encouraging community outreach, eco-friendly initiatives, and ethical engineering practices.

The structured OBE framework at Ashokrao Mane Group of Institutions, Vathar ensures a holistic, student-centric approach that fosters academic excellence, professional competency, and lifelong learning. Through continuous assessment, industry integration, and innovative teaching methodologies, the college is committed to producing competent engineers and future leaders.

## METHODS TO BRIDGE CURRICULUM GAPS

Curriculum gaps may arise due to rapid technological advancements, evolving industry demands, accreditation requirements, or the need for interdisciplinary skills. To ensure students are well-prepared for industry, research, and entrepreneurship, the following strategies are implemented to bridge curriculum gaps effectively.

### 7.1 INDUSTRY-ACADEMIA COLLABORATION

- **Guest Lectures & Expert Talks:** Industry professionals and subject matter experts conduct sessions on emerging technologies.
- **Industry Visits & Internships:** Students gain practical exposure through real-world industry experiences.
- **Memorandums of Understanding (MoUs):** Collaborations with industries help integrate industry-specific topics into the curriculum.

### 7.2 VALUE-ADDED COURSES & CERTIFICATIONS

- **Professional Certification Programs:** Courses like Python, AI-ML, IoT, Cloud Computing, Cybersecurity, and Data Science provide additional skills.
- **Skill-Based Training:** Short-term courses aligned with industry needs enhance employability.

### 7.3 PROJECT-BASED & EXPERIENTIAL LEARNING

- **Live Industry Projects:** Students work on industry problems to gain hands-on experience.
- **Capstone Projects:** Final-year students develop innovative solutions based on real-world challenges.
- **Hackathons & Technical Competitions:** Encourage problem-solving, innovation, and interdisciplinary learning.

### 7.4 FACULTY DEVELOPMENT & TRAINING

- **Workshops & Seminars:** Faculty members undergo training on advanced teaching methodologies.
- **Industrial Training for Faculty:** Enhances awareness of industry expectations and helps update course content accordingly.

### 7.5 RESEARCH & INNOVATION INITIATIVES

- **Centers of Excellence:** Specialized labs for Manufacturing, Automobile, IoT, Robotics, etc. foster research.
- **Encouraging Patents & Publications:** Faculty and students are motivated to file patents and publish research papers.

### 7.6 SOFT SKILLS & PERSONALITY DEVELOPMENT

- **Communication & Leadership Training:** Enhancing professional skills for global employability.
- **Mock Interviews & Resume Building:** Preparing students for placement and higher education opportunities.
- **Entrepreneurship Development Programs:** Encouraging students to start their ventures through incubation support.

## 7.7 CURRICULUM REVISION & CONTINUOUS IMPROVEMENT

- **Feedback Mechanism:** Inputs from students, alumni, employers, and industry experts are analyzed to identify gaps.
- **Outcome-Based Education (OBE) Implementation:** Regular CO-PO-PSO attainment analysis ensures curriculum effectiveness.
- **Interdisciplinary Electives:** Courses that integrate knowledge from multiple domains to broaden student perspectives.

By adopting a structured and dynamic approach to bridge curriculum gaps, Ashokrao Mane Group of Institutions, Vathar ensures students are equipped with industry-relevant knowledge, technical skills, and professional competencies. These initiatives help in creating future-ready graduates who can excel in their careers, research, and entrepreneurship.

## 8. ATTAINMENT OF COURSE OUTCOMES (COs), PROGRAM OUTCOMES (POs) AND PROGRAM-SPECIFIC OUTCOMES (PSOs)

The attainment of Course Outcomes (COs), Program Outcomes (POs), and Program-Specific Outcomes (PSOs) is a crucial part of Outcome-Based Education (OBE). The process involves systematic assessment, analysis, and continuous improvement to ensure students acquire the necessary knowledge, skills, and competencies.

### 8.1 CO ATTAINMENT PROCESS

As per institute academic process manual, the attainment of course outcomes is carried out using process steps given in following table 8.1.

**Table 8.1: CO Attainment Process**

Sr. No.	Activity	Responsibility
01	Dr. Babasaheb Ambedkar Technological University Lonere - Board of Studies of respective programs have framed COs of courses while revisions and finalizing the syllabus. These COs are retained if domain coordinator and course faculty are convinced/agreed.	Course Faculty/ Domain Coordinator
02	If there is a need to modify course outcomes, Bloom Taxonomy Levels should be followed by course faculty. The domain coordinator shall confirm the same.	Course Faculty
03	The course outcomes are disseminated to students through course notes, website, lab manuals, ERP and during teaching learning process.	Course Faculty
04	Course outcomes are mapped with Program Outcomes (POs) at three levels of relevance as; (a) Slight (Low) : 1; (b) Moderate (Medium) : 2; (c) Substantial (High) : 3.	Course Faculty
05	The Direct and Indirect assessment tools are used for determining the CO-PO attainment. The weightage for direct and indirect assessment tools are set to 90% and 10% respectively.	Course Faculty
06	Direct Assessment Tools are again sub-classified as internal and external assessment tools. The weightage for internal and external assessment tools are set to 30% and 70% respectively. The target for internal assessment tools are set.	Course Faculty
07	The target for external assessment tools are set.	HOD, Domain coordinator, academic coordinator

08	The assessment results are filled in CO-PO-PSO attainment calculation excel sheet.	Course Faculty
09	The assessment tools are mapped with concerned course outcomes. Percentage CO attainment and CO attainment level is obtained.	Course Faculty
10	The CO attainment is compared with the set target. If it is less than set target, then attainment analysis report should be submitted to domain coordinator and HOD.	Course Faculty
11	CO-PO-PSO mapping is filled in excel sheet. And PO-PSO attainment is obtained.	Course Faculty
12	Course wise CO attainment (%) and Level summary is prepared.	Academic Coordinator

The details of the assessment tools used for evaluating attainment of course outcomes is shown in following table 8.2.

**Table 8.2: Assessment tool for measuring Course Outcome Attainment**

Assessment Method	Assessment Tool		Process for Data Collection
<b>Direct Method (80%)</b>	<b>University Examination (60 %)</b>	In-Semester Examination	University level examination and evaluation of the answer sheets.
		End-Semester Examination	University level examination and evaluation of the answer sheets.
		Practical Examination	Evaluation of the term work, practical examination, oral examination, and the score of the students out of 25/50/100 depending on the individual courses.
		External Oral Examination	
	Term work, Project Presentation, Seminar presentation		
	<b>Internal Assessment (40%)</b>	Class Tests 1 and 2	Examination and evaluation of the answer sheets by the Course in-charge.
		Assignments	Evaluation of the assignments by the Course in-charge.
		Laboratory Performance	Continuous Evaluation and assessment of the Laboratory Performance by the Course in-charge.
Project review, Seminar review and PBL review		Evaluation of the Project reviews, seminar reviews and PBL reviews by the respective review committee.	

		Project review, Seminar review and PBL review	Evaluation of the Project reviews, seminar reviews and PBL reviews by the respective review committee.
<b>Indirect Method (20%)</b>	<b>Course Exit Survey</b>		Collecting the responses from the students about their understanding of the course. This survey is conducted at the end of every semester.

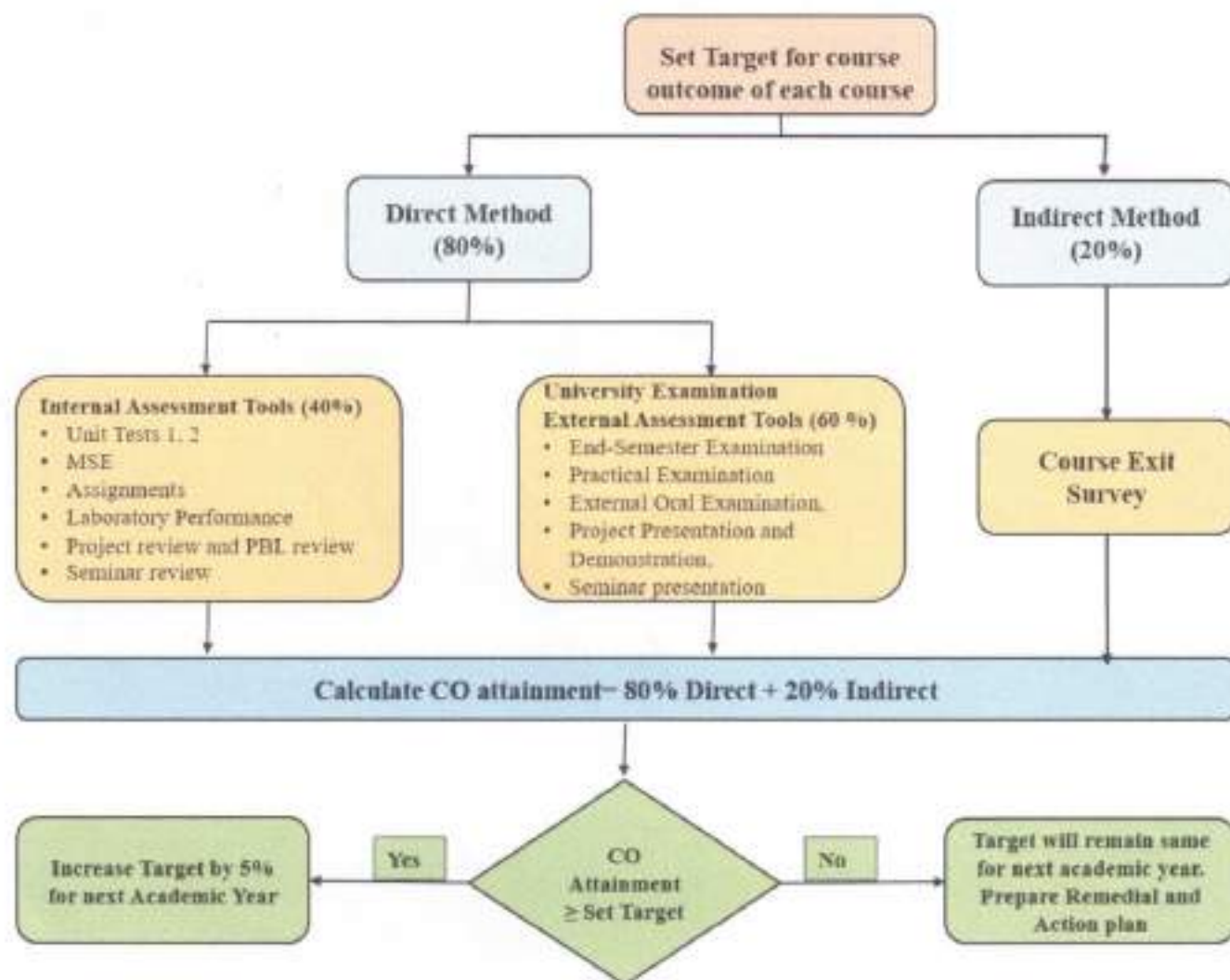


Figure 8.1: CO Attainment Calculation Process

**Direct Assessment Tools:**

The assessment of course outcomes (COs) is evaluated using direct assessment tools, which include internal and external assessments. Internal assessment contributes 30% and

**Direct Assessment Tools:**

The assessment of course outcomes (COs) is evaluated using direct assessment tools, which include internal and external assessments. Internal assessment contributes 30% and external assessment contributes 70% to the overall assessment of course outcomes.

**Internal Assessment:**

In order to evaluate the attainment of course outcomes of theory courses, class tests and assignments are used as effective assessment tools. Each course is divided into six units, which is evaluated through 2 class tests. Class test 1 covers the first two units and class test 2 covers the remaining four units. Also assignments are given, to evaluate all course outcomes of each course. The questions in these assessments are designed in accordance with Blooms Taxonomy and are mapped to the specific course outcomes (COs) of the course.

In order to evaluate the attainment of course outcomes of lab courses laboratory performances in accordance with course outcomes of lab courses are used as internal assessment tools.

For courses like Seminar, Internship, Project Based Learning and Project, performance reviews are used as an internal assessment tool.

**External Assessment:**

The university conducts in-semester and end-semester examinations to evaluate students' performance in theory courses and oral, practicals and term work for seminar, internship, project and lab courses. The university declared results of these examinations are used as external assessment tools.

**Indirect Assessment Tool:**

Course Exit Survey: At the end of each semester the course exit surveys are conducted for all the courses completed in the respective semester. The course exit surveys are well-designed and focused on relevant and meaningful questions covering all the course outcomes. The results of these surveys are used as an indirect assessment tool.

## 8.2 RECORD THE ATTAINMENT OF COURSE OUTCOME OF ALL COURSES WITH RESPECT TO SET ATTAINMENT LEVELS

### Attainment Levels

The minimum target percentage of marks to calculate CO attainment is decided based on difficulty level of the courses. Furthermore, following table 8.3 also highlights the attainment level for the courses.

**Table 8.3: Range of Marks and its attainment level.**

Range of Marks (%)	Attainment Level
Less than 40 %	No attainment
40 to Less than 55 %	1
55 to Less than 65 %	2
Above 65 %	3

For each academic year (i. e. AY 2020-21, 2021-22 and 2022-23), the minimum target marks are decided based on the attainment achieved for the previous year. If the target of CO attainment is achieved in the previous year, then the target marks are increased for current year and if not, it is kept same as that of the previous year. The reasons are identified for the courses whose COs are not attended and further action plans are prepared.

Attainment levels for Course Outcomes (COs) are a measure of students achievement in meeting the course objectives. These levels are assessed using a variety of tools, and the attainment level may be stated as a percentage of students expected to achieve a certain threshold of marks. The attainment level is then measured as the actual percentage of students who meet or exceed the set threshold. The defined attainment levels are;

**Attainment Level 0:** Less than 50% students scoring more than target percentage of marks out of the relevant maximum marks.

**Attainment Level 1:** 50% to less than 60% students scoring more than target percentage of marks out of the relevant maximum marks.

**Attainment Level 2:** 60% to less than 70% students scoring more than target percentage marks out of the relevant maximum marks.

**Attainment Level 3:** More than 70% students scoring more than target percentage marks out of the relevant maximum marks.

On the basis of results from assessment tools, the attainment levels are decided based on the details mentioned in above Table 8.3.

### Mapping of Assessment Tools and Course Outcomes

Mapping assessment tools and COs is an important part of the assessment process and can help to ensure that student performance is evaluated consistently and effectively. Mapping of assessment tools and course outcomes (COs) involves identifying which assessment tools are appropriate for evaluating specific COs. This process ensures that the assessment tools align with the intended learning outcomes and measure the desired knowledge, skills, and abilities.

This process also helps to ensure that the assessment methods are valid and reliable, and that they provide accurate and meaningful information about student learning.

CO attainment calculations for Industrial Engineering (C402049B) course based on used assessment tools (Batch 2019-23) is shown in tables from Table 8.4 to Table 8.8.

**Table 8.4 : Weightage of Assessment type**

Assessment type	% weightage
Direct	90
• External	60
• Internal	40
Indirect	10

**Table 8.5: Minimum Marks (%) Target based on the difficulty levels**

Target Setting	Attainment Level	Category of Attainment	% students	% Marks
	-	No attainment	0	75
	1	Low	50	75
	2	Medium	60	75
	3	High	70	75

**Table 8.6: Mapping of COs with assessment tools**

CO Mapping		CO1	CO2	CO3	CO4	CO5	CO6
Internal	Assignment 1	Y					
	Assignment 2		Y				
	Assignment 3			Y			
	Assignment 4				Y		

Direct Attainment	Assessment Tools	Assignment 5					Y	
		Assignment 6						Y
		Class Test 1	Y	Y				
		Class Test 2			Y	Y	Y	Y
	External Assessment Tools	Theory	Y	Y	Y	Y	Y	Y
Indirect Attainment	End of Course Survey	ECS Q 1	Y					
		ECS Q 2		Y				
		ECS Q 3			Y			
		ECS Q 4				Y		
		ECS Q 5					Y	
		ECS Q 6						Y

Note: Y indicates assessment tool is linked with course outcome

Table 8.7: CO Attainment Percentage calculations for Direct and Indirect Assessment Tools

% CO Attainment			CO1	CO2	CO3	CO4	CO5	CO6
Direct Attainment	Internal Assessment Tools	Assignment 1	100.00					
		Assignment 2		100.00				
		Assignment 3			100.00			
		Assignment 4				100.00		
		Assignment 5					100.00	
		Assignment 6						100.00
		Class Test 1	85.23	80.65				
		Class Test 2			60.32	75.17	75.19	85.91
		Internal Attainment	92.62	90.32	80.16	87.58	87.59	92.95
	External Assessment Tools	Theory	54.97	54.97	54.97	54.97	54.97	54.97
External Attainment		54.97	54.97	54.97	54.97	54.97	54.97	
Direct Attainment			66.26	65.57	62.52	64.75	64.76	66.36
Indirect Attainment	End of Course Survey	ECS Q 1	100.00					
		ECS Q 2		100.00				
		ECS Q 3			100.00			
		ECS Q 4				100.00		
		ECS Q 5					100.00	

	ECS Q 6						100.00
<b>Indirect Attainment</b>		100.00	100.00	100.00	100.00	100.00	100.00
<b>Final % CO Attainment</b>		66.26	65.57	62.52	64.75	64.76	66.36

Table 8.8: CO Attainment Level calculations for Direct and Indirect Assessment Tools

CO Attainment Level			CO1	CO2	CO3	CO4	CO5	CO6
<b>Direct Attainment</b>	<b>Internal Assessment Tools</b>	Assignment1	3.00					
		Assignment2		3.00				
		Assignment3			3.00			
		Assignment4				3.00		
		Assignment5					3.00	
		Assignment6						3.00
	Class Test 1	3.00	3.00					
	Class Test 2			2.03	3.00	3.00	3.00	
	Internal Attainment	3.00	3.00	2.52	3.00	3.00	3.00	
	<b>External Assessment Tools</b>	Theory	1.50	1.50	1.50	1.50	1.50	1.50
External Attainment		1.50	1.50	1.50	1.50	1.50	1.50	
<b>Direct Attainment</b>			1.95	1.95	1.80	1.95	1.95	1.95
<b>Indirect Attainment</b>	<b>End of Course Survey</b>	ECS Q 1	3.00					
		ECS Q 2		3.00				
		ECS Q 3			3.00			
		ECS Q 4				3.00		
		ECS Q 5					3.00	
		ECS Q 6						3.00
<b>Indirect Attainment</b>			3.00	3.00	3.00	3.00	3.00	3.00
<b>Final CO Attainment Level</b>			2.63	2.56	2.25	2.48	2.48	2.64

As per the institute academic process manual, the attainment of program outcomes (POs) and program specific outcomes (PSOs) is carried out using process steps given in following table.

Table 8.9: PO-PSO Attainment Process

Sr. No.	Activity	Responsibility
01	The POs and PSOs attainment target is set by the institute based on the direct assessment and indirect assessment.	Principal, IQAC
02	For overall attainment of each POs and PSOs, 80 % weightage is given to direct assessment and 20 % weightage is given to indirect assessment.	Principal, IQAC

03	The Target of PO/PSO for the admitted batch 2020-21 is set as follows: PO1 to PO5 – 55 % (1.65) PO6 to PO12 – 50 % (1.5) PSOs – 55 % (1.65)	Principal, IQAC
04	If the PO/PSO attainment of the present batch is not attained, then target of the next batch is retained as previously defined targets. Observations should be noted and corrective actions should be planned to achieve targets.	PAQIC, Head of Department
05	If the PO/PSO attainment of the present batch is attained, then target of the next batch is incremented additionally by 5% of the set previous targets.	PAQIC, Head of Department

The assessment tools and processes used for measuring the attainment of Program Outcomes (POs) and Program Specific Outcomes (PSOs) are summarized in following Table 8.10.

**Table 8.10: Assessment tools and processes for attainment of the POs and PSOs**

Assessment Method	Source for Data Collection	Frequency/ Data Collection
<b>Direct Method</b> ( 80% of average POs attainment by direct method)	Average attainment of Course Outcomes	Once in a Semester
<b>Indirect Method</b> (20% of overall attainment of POs by indirect method))	Program exit surveys Extra-curricular and Co-curricular activities	Once in a year
	Employer surveys	Regular
	Alumni surveys	Regular
	Extra-curricular and Co-curricular activities	Regular

**Direct Assessment:** Direct assessment of POs and PSOs is based on the attainment of Course Outcomes (COs), where COs are mapped to POs and PSOs.

**Indirect Assessment:** Indirect assessment of POs and PSOs is conducted through surveys and extra- curricular and co- curricular activities. The surveys include program exit survey, employer survey, and alumni survey. The extra-curricular and co- curricular activities include event participation, site visits, guest/ expert lectures, alumni interactions, Student training programs/Hands on training programs/ Workshops and Student Association/Chapter Activities etc.

### 8.3 CO, PO AND PSO ATTAINMENT CALCULATION

The assessment tools and processes used for measuring the attainment of Program Outcomes (POs) and Program Specific Outcomes (PSOs) are summarized in Table 8.11.

**Table 8.11: Assessment tools and processes for attainment of the POs and PSOs**

Assessment Method	Source for Data Collection	Frequency/ Data Collection
Direct Method ( 100% of average POs attainment by direct method)	Average attainment of Course Outcomes	Once in a Semester

**Direct Assessment:** Direct assessment of POs and PSOs is based on the attainment of Course Outcomes (COs), where COs are mapped to POs and PSOs.

#### POs Attainment:

Course	PO1	PO2	PO3	PO4	PO5	PO6	PO7	PO8	PO9	PO10	PO11
101001	1.3	1.22	1.3	1.3	1.26	1.55	PO7	PO8	PO9	PO10	PO11
101002	1.54	1.55	1.3	1.64	1.48	PO6	1.05	PO8	1.55	PO10	PO11
101007	3	3	3	2	2	2	2	3	2	3	2
101011	1.58	1.51	1.5	1.46	1.5	PO6	1.5	PO8	1.46	1.46	1.46
101014	2.5	PO2	PO3	3	PO5	3	3	2	2	PO10	2
102007	1.53	1.45	1.5	1.55	1.6	1.52	1.71	PO8	PO9	PO10	PO11
102012	1.71	PO2	1.8	PO4	1.9	PO6	PO7	PO8	1.31	1.37	PO11
103004	1.33	1.31	1.6	1.63	1.33	PO6	0.96	1.03	PO9	1.05	PO11
104010	1.26	1.12	1.1	1.12	1.52	1.33	1.58	PO8	1.22	1.42	0.99
107000	1.62	1.61	1.7	1.64	1.65	1.65	1.45	PO8	1.65	PO10	1.65
107005	1.32	1.36	1.5	1.32	1.47	PO6	1.35	PO8	PO9	PO10	PO11
110005	1.74	1.64	1.8	1.23	1.16	PO6	PO7	1.04	1.61	1.22	PO11
110013	1.8	3	3	2	3	2	3	2	1.8	2	2
119005	2.43	2.43	PO3	PO4	2.82	2.85	PO7	PO8	PO9	PO10	PO11

#### PO Attainment Level

Course	PO1	PO2	PO3	PO4	PO5	PO6	PO7	PO8	PO9	PO10	PO11
Direct Attainment	1.75	1.75	1.72	1.61	1.70	1.99	1.77	1.93	1.56	1.65	1.68
GD Attainment	1.75	1.75	1.72	1.61	1.70	1.99	1.77	1.93	1.56	1.65	1.68

#### PSOs Attainment:

Course	PS01	PS02	PS03	PS04
1010073	2	2	3	2
101011	1.62	1.01	1.53	1.12
101014	2.9	PS02	PS03	1.5
102003	1.53	1.53	1.55	1.45
102012	1.69	PS02	1.24	PS04
103004	1.11	0.55	PS03	PS04
104010	1.50	1.08	0.93	0.53
107001	1.22	1.53	1.07	PS04
107002	1.58	1.13	1.55	1.29
107008	1.01	1.61	1.1	0.95
107009	1.56	1.3	PS03	PS04
110005	1.66	1.33	1.55	1.23
110013	2.7	3	PS03	3
110006	1.43	PS02	2.15	PS04

### PSO Attainment Level

Course	PS01	PS02	PS03	PS04
Direct Attainment	1.03	1.45	1.55	1.41
CO Attainment	1.03	1.45	1.55	1.41

### CONCLUSION

Outcome-Based Education (OBE) is a student-centered approach that has gained popularity in higher education institutions due to its ability to improve student outcomes and institutional effectiveness. Implementing OBE can be challenging, but with the right tools and strategies, institutions can successfully transition to this new approach.

*Ashokrao*  
HOD

DEPT. OF ELECTRONICS AND COMPUTER ENGINEERING  
SHRI BALASAHEB MANE SHIKSHAN PRASARAK MANDAL'S  
ASHOKRAO MANE GROUP OF INSTITUTIONS



*Dr. Mrs. S. R. Chougule*

Dr. Mrs. S. R. Chougule  
DIRECTOR  
Shri Balasaheb Mane Shikshan Prasarak Mandal's  
Ashokrao Mane Group Of Institutions  
Vathar Tarf Vadgaon, Tal. Matkanangale  
Dist. Kolhapur, Maharashtra - 416112